

InfoQueue

Strong Concepts Newsletter

Volume 19, Number 1

September, 2008

Introducing **TEAPAC Complete** Version 8.0

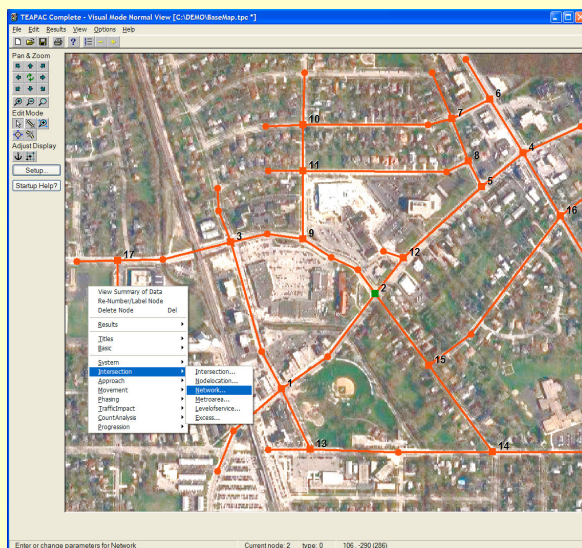
Now
All of TEAPAC
in
One Program
with
New Low Pricing!

**All 15 TEAPAC Programs
Together in One Program**

**New Lower Pricing for
Single User/Computer Licenses**

**New Software Maintenance Plan Eliminates
Update/Upgrade Fees Forever**

**Familiar Visual TEAPAC Interface and
Upwards Compatibility**



Visit the main page at StrongConcepts.com to see more detailed color screen-shots of TEAPAC Complete

TEAPAC Complete, Version 8.0

TEAPAC Complete (Version 8) has been released with major enhancements, merging all TEAPAC programs into a single program and license, with new, **low pricing** for single user/computer licenses.

TEAPAC Complete represents an unprecedented leap forward in the seamless execution of the wide variety of traffic and transportation functions supported through the years by TEAPAC. Imagine, just one program and one data file to manage all TEAPAC functions and all external programs, for as many as 500 intersections per file, and as many as 25 scenario conditions each for up to 5 independent scenario issues!

Life couldn't be easier when you're using TEAPAC Complete for all of your multi-scenario traffic and transportation analyses. Read on to see examples of how Strong Concepts' **35 years of PE/PTOE experience** in traffic and transportation engineering and professional software development are hard at work for you as the **TEAPAC Complete** user.

All 15 TEAPAC Programs Together in One

All of the functionality of 15 TEAPAC programs is now available in a single program, delivered for one low price with a single program license, as follows:

- **HCM2000-compliant** signalized **capacity analysis** and full **HCM optimization** of splits, cycle and phasing (also known as SIGNAL2000).
- Estimation of projected volumes for **traffic impact studies**, including user-adjustable, automated **on-screen assignments** of site traffic (also known as SITE).

- **MUTCD-compliant** signal warrant and multi-way stop **warrant analyses** (also known as WARRANTS).
- Complete traffic count analysis, including **peak period determination** and import of count data from a multitude of **electronic traffic counters** (also known as TURNS).
- Simplified **bandwidth arterial progression** optimization with full-color **time-space diagrams** (also known as NOSTOP).
- Full Export Capabilities for well-established third-party programs, such as **HCS, TRANSYT-7F, PASSER-II, CORSIM, TS/PP-DRAFT & SYNCHRO/SIMTRAFFIC** (also known as SIGNAL2000, PRETRANSYT, PREPASSR, PRENETSIM, PRETSPPD and PRESYNCHRO).
- Full **Import** Capabilities for a complete network created in **SYNCHRO** Ver 5, 6 or 7 (also known as PRESYNCHRO).
- Revolutionary TEAPAC **multi-variable, multi-scenario data management** for all applications above (also known as SCENARIO).
- **Seamless exchange of inputs and results** between all combined applications, such as peak period volumes, projected traffic volumes, optimized signal timings, computed saturation flow rates. etc.
- **One downloadable manual** (and one on-screen help system) covers the entire breadth of TEAPAC applications, with full index and improved graphics and output examples.

Check out the flowchart on page 4 for more details, or the **animated PowerPoint slide shows** at www.StrongConcepts.com. TEAPAC *Complete* offers unprecedented efficiencies for conducting a wide variety of analyses with a minimum amount of hassle and maximum reliability.

New Lower Pricing for Single User/Computer

The base TEAPAC Complete license is now a single user/computer license, not a site license, so the **base price for TEAPAC Complete Ver 8 is significantly lower than before, as low as \$995** for the entire TEAPAC system. Discounts are available for multi-copy licenses, including site licenses and agency licenses. **Upgrade pricing** is available for recent TEAPAC licenses, with credit given for recent license and update fees.

New Software Maintenance Plan Eliminates Update/Upgrade Fees Forever

New licenses (and upgrades from prior versions) include maintenance for the next 12 months, which **includes free downloads of any and all updates and upgrades** posted during the maintenance period. This means low and predictable pricing for future maintenance periods - no more guesswork to budget for future updates or upgrades.

Familiar *Visual* TEAPAC Interface and Upwards Compatibility

Graphical front-end allows drag-and-drop on-screen network editing and creation over a background bitmap image (such as aerial photos, maps, plan drawings, etc.).

Enhanced graphical reports make results easier to read and nicer to look at (including phasing diagrams, time-space diagrams, intersection diagrams, cycle optimization graphs, daily count variation graphs, etc.).

Upwards and downwards compatible with prior TEAPAC data files.

What Is TEAPAC's Scenario Management?

TEAPAC Complete has a built-in function that can create multi-scenario data files either from scratch or from data files of earlier versions of TEAPAC. Users can:

- ♦ select from pre-defined typical scenario structures like multiple volume conditions or multiple timing plans,
- ♦ create completely unique scenario conditions for their analyses, or
- ♦ customize a pre-defined scenario structure to meet their specific needs.

The primary advantage of using SCENARIO is that all the scenario data is saved without dangers of duplicated data which often occur when scenarios are managed by the typical use of File-SaveAs.

Our Internet distribution delivers licenses & upgrades **to your desktop the same day** an order is received. Call and start using TEAPAC *Complete* **today!**

Multi-scenario analyses are endemic to our profession in traffic and transportation engineering. Everyone does these types of analyses all the time. So why is SCENARIO such a significant breakthrough? The answer lies in the way that most multi-scenario analyses are currently conducted versus how it is handled with SCENARIO, and the ramifications these differences have on the analyst. See if the following circumstances don't ring true for you.

The most common way to create a multi-scenario analysis with ANY program is to open the data file from the first analysis, change the data that defines the second scenario, and use File-SaveAs to save the conditions under a different file name. This is easily done for any number of conditions that are analyzed, and is often extended as the project proceeds to consider scenarios not originally anticipated.

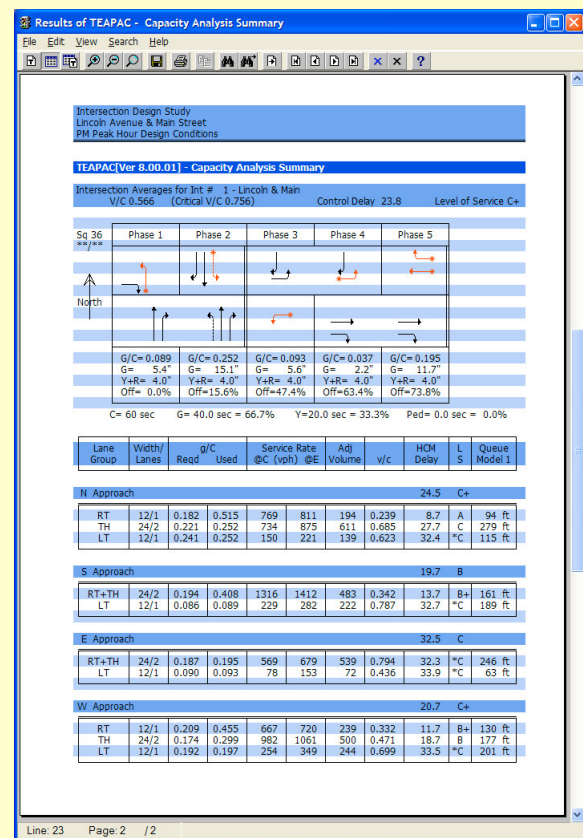
The problem with this approach is that typically 90% or more of the data saved in each file is exactly the same, and if any of that data changes during the course of the analysis, it must be changed in every file. This is a time-consuming and tedious effort that is frequently omitted due to lack of time, budget or motivation. This is where the SaveAs approach breaks down and is often the root cause of sometimes debilitating problems later on in the project.

Enter SCENARIO, to the rescue: For data which does not change from case to case, SCENARIO only saves one copy of that data in one *Base* place, so if it changes, it only needs to be changed in one place. It is changed quickly, easily and without hesitation, keeping the entire database for all the project analyses internally consistent for any subsequent analyses later on. At a later time, additional data can be removed from the *Base* data and added to any of the independent *Issues* with unique values for each given *Condition*, or data can be removed from any *Issues* and assigned back to the *Base* data, or even subsequently to another *Issue*.

Any data dialog can be assigned to any *Issue*, as defined by the needs of the project, resulting in a customized multi-issue, multi-scenario analysis free of any problematic occurrences of duplicated data. As a multi-scenario analysis inevitably becomes more complex and involved as a project progresses, the clean management of your data offered by SCENARIO becomes more & more valuable.

Visual Features Found in TEAPAC Complete

- » » **Graphical front-end** allows network creation and editing directly on-screen (see example screen shot on page 1).
 - Drag-and-drop manipulation of network.
 - Bitmap background for ease of creating network and visualizing results (aerial photo, map, plan drawings, etc.)
 - Right-click access to all data entry dialogs, as well as analysis results dialogs.
- » » **Enhanced graphical reports** make results easier to read and nicer to look at.
 - Full use of color and graphics drawing for arrows, phasing diagrams, permitted movements, time-space diagrams, intersection diagrams, cycle optimization graphs, daily count variation graphics, etc.
 - Printable on any color or black-and-white printer supported by Windows; pastable as .bmp bitmap into any other application.
- » » **Ring-Based Timing Display** option and new permitted left turn features.
- » » **On-screen Assignments** on the graphical network display.



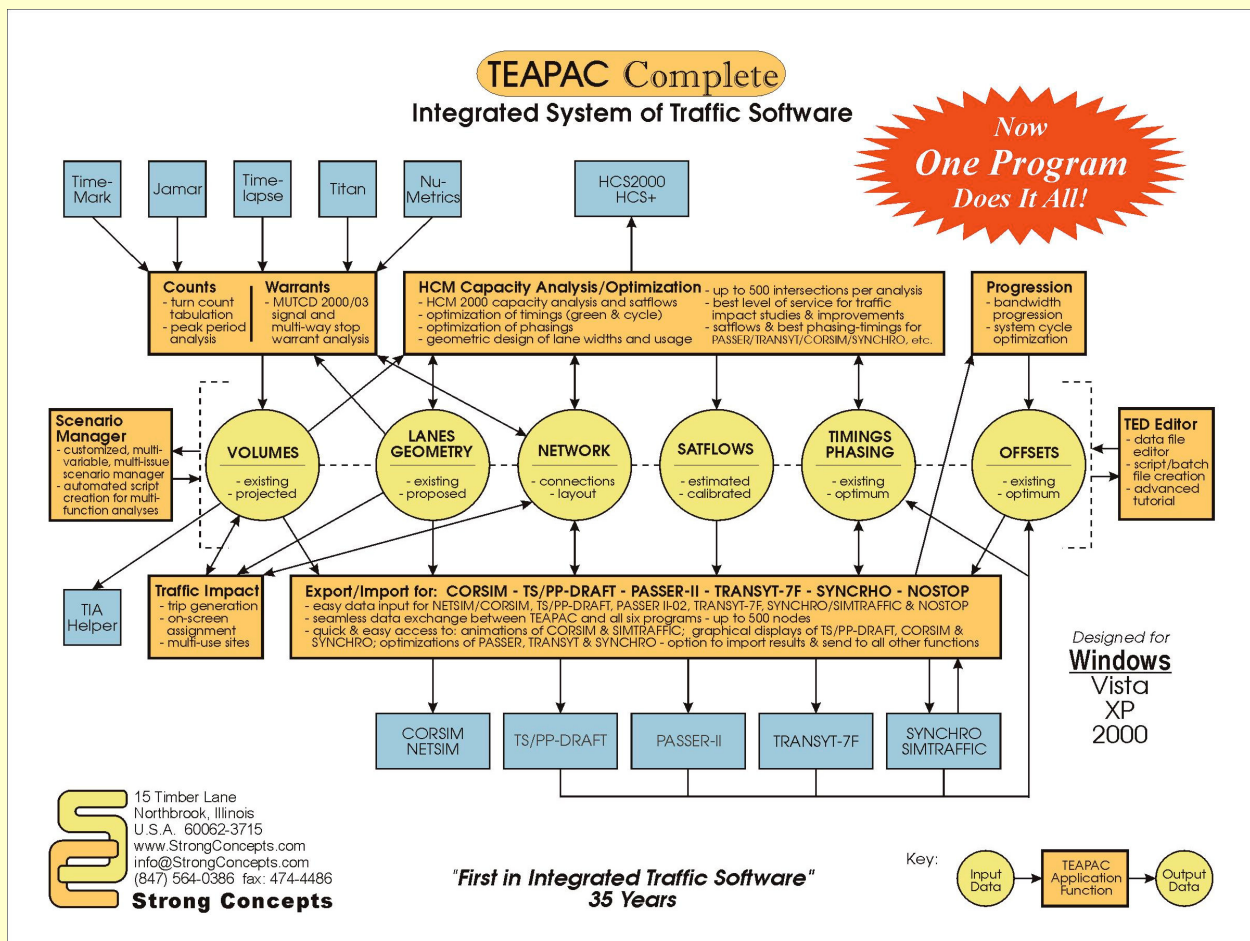
Example Graphical Output from TEAPAC Complete

Strong Concepts
15 Timber Lane
Northbrook, Illinois U.S.A. 60062-3715

FIRST CLASS

FIRST CLASS
MAIL
U.S. POSTAGE
PAID
Northbrook, IL
PERMIT #1876

ADDRESS SERVICE REQUESTED



Electronic Notification Service

People who have enrolled in our Electronic Notification Service may have received much of the information contained in this newsletter via email at an earlier date. If you wish to get timely notice of developments at Strong Concepts via email as they happen, go to the **Join Our Mailing List** section of our web page at www.StrongConcepts.com and provide the necessary information.